



HP Ergosoft RIP Color Edition

Highlights of the Ergosoft 16 Release



Improved User Interface. Enhanced Production & Workflow.

With a focus on refinements and improvements related to user interaction with the product, we made basic features more intuitive, and advanced features more accessible.

Ergosoft 16 is a more complete production and workflow suite, with an emphasis on making the job of the RIP operator more efficient.



HP Ergosoft RIP Color Edition (V16)

Feature Overview

		HP Ergosoft RIP S300 (basic)*	HP Ergosoft Pro RIP S500	HP Ergosoft Pro RIP S1000
Job Composing	JobComposer <small>Improved</small>	●	●	●
	Image Add-Ons & Image Editing Tools	●	●	●
	Print Environment Features	●	●	●
	Repeat Print (Copy without Gap)	●	●	●
	Shrinkage Feature	●	●	●
	Tiling & Rectangular Nesting	●	●	●
	Variable Data Basic		●	●
	Position Templates		●	●
Color	Color Replacement Suite <small>Improved</small>	●	●	●
	Density Linearisation & Ink Limiting <small>Improved</small>	●	●	●
	ColorEqualizer <small>New</small> /SwatchMatcher <small>New</small>	●	●	●
	Color Books <small>Improved</small>		●	●
	HP Professional Pantone Emulation	●	●	●
	Print Pantone Emulation Swatchbook	●	●	●
	HP Easy Profiling	●	●	●
Production	QueueManager <small>New</small>		●	●
	Preset Suite <small>New</small>		●	●
	HotFolder <small>Improved</small>		●	●
	Job Preflight <small>Improved</small>		●	●
	Job Ticket		●	●
	Quality Control Basic		●	●
RIP	Number of active Ergosoft RipEngines	8	8	8
	PostScript® / PDF® Engine	●	●	●

		HP Ergosoft RIP S300 (basic)*	HP Ergosoft Pro RIP S500	HP Ergosoft Pro RIP S1000
Manage	CostManager <small>New</small>		●	●
	AccessRights Control		●	●
	Job Processing Policies <small>Improved</small>		●	●
PrintQueues	Included Queues	S300/S500**	S300/S500	S1000
	Add Queue for HP Stitch S300/S500	Option	Option	Option
	Add Queue for HP Stitch S1000	Option	Option	Option
	Add Queue for other HP Printers	Option	Option	Option
Options & Others	ColorGPS Profiler	Option	●	●
	ColorGPS Profile Editor	Option	Option	Option
	TrueShape Nesting	Option	Option	Option
	ColorCombine	Option	Option	Option
	Background Color Removal	Option	Option	Option
	White & Special Channels <small>(for other technologies)</small>		●	●

* "In the Box" with S500 in AMS region

** Included S300 or S500 Queue for AMS region



HP Ergosoft RIP Color Edition (V16)

New and Improved Features

Production & Workflow

Feature	HP Ergosoft RIP (basic)	HP Ergosoft Pro RIP
JobPresets <small>Improved</small>		•
Print & CutQueues <small>Improved</small>	•	•
QueueManager <small>New</small>		•
Print & Cut Workflows <small>Improved</small>	•	•
Job Costs <small>New</small>		•
HotFolder <small>Improved</small>		•
Improved Status Monitor for Stitch Series <small>Improved</small>	•	•

Usability

Feature	HP Ergosoft RIP (basic)	HP Ergosoft Pro RIP
ControlCenter <small>New</small>	•	•
SystemGuard <small>New</small>	•	•
Print & Cut Environment Wizard <small>New</small>	•	•
Online Customer Documentation Portal <small>New</small>	•	•

Color & Color Control

Feature	HP Ergosoft RIP (basic)	HP Ergosoft Pro RIP
SwatchMatcher <small>New</small>	•	•
SwatchBook <small>Improved</small>	•	•
Color Replacement <small>Improved</small>	•	•
Gamut Warning as thematic Map <small>New</small>	•	•
Target Printer Simulation <small>Improved</small>	•	•
ColorEqualizer <small>New</small>	•	•
Improved EPS/PDF Preview <small>Improved</small>	•	•
Density Linearization <small>Improved</small>	•	•



How to read the Highlights

General	This Highlights document features three chapters: Production & Workflow, Usability, Color & Color Control.
Summary	The “Summary” section of each chapter gives a high-level summary of new or enhanced features.
Details	The “Details” section of each chapter adds more technical details about new or enhanced features.
[16.1]	Indicates tools and features that have been introduced or enhanced with release 16.1
[16.2]	Indicates tools and features that have been introduced or enhanced with release 16.2.
*NEW	Indicates specific features in the Details - Section that have been introduced with Ergosoft 16.
○●	Available in Pro RIP Edition only
●●	Available in both Editions





Production & Workflow



Production & Workflow

Summary

JobPresets ○●

[16.1] This is a new feature, which allows the customer to create templates with various pre-defined parameters related to new job creations.

Print & CutQueues ●●

[16.1] These modules have been completely re-designed. The newly-created 'workspaces' feature allows the user to arrange the window panes according to their preferences, and save the layout for future use.

[16.2] Create custom queries to filter content and easily switch between queries based on e.g. selected media.

QueueManager ○●

[16.1] The JobCenter is now called QueueManager, and also has been re-designed. Custom Workspaces are supported.

Furthermore, the enhanced view filter feature allows to easily switch between views of queues depending on customer queries. Also, the production database export generates an extended production data report.



Production & Workflow Summary

Print & Cut Workflows ●●

[16.1] A new Image Action called Smart Bleed & Cut Lines has been added to the JobComposer.

This allows the user to create contour bleed & cut lines within or around images.

The new Print & Cut Workspace includes improved live cut path previews and the support of new cut path origins (PDF boxes, Adobe Photoshop Paths, bounding box of grouped images.)

Job Costs ○●

[16.1] The CostManager is a new tool that allows for the centralized management and bulk-editing of all production cost factors.

Overall cost estimation and reporting have been improved.

Expanded Feature Scope Includes:

- Alternative Printer Cost Calculation Method (based on printed area, instead of time printed)
- New Job Properties & Actions Estimate Production Cost
- Job Preflight, Import & Export of Customer Lists into the RIP
- User-definable Currency & Metrics

Note: For Contone driver interfaces such as the HP Stitch Series, the calculation of Ink Cost within the HP Ergosoft RIP is not supported.



Production & Workflow Summary

HotFolder ○●

[16.1] Various enhancements have been implemented to the HotFolder to meet today's requirements of automated workflows.

[16.2] A new function to import/export HotFolder settings simplifies the creation and configuration of HotFolders.

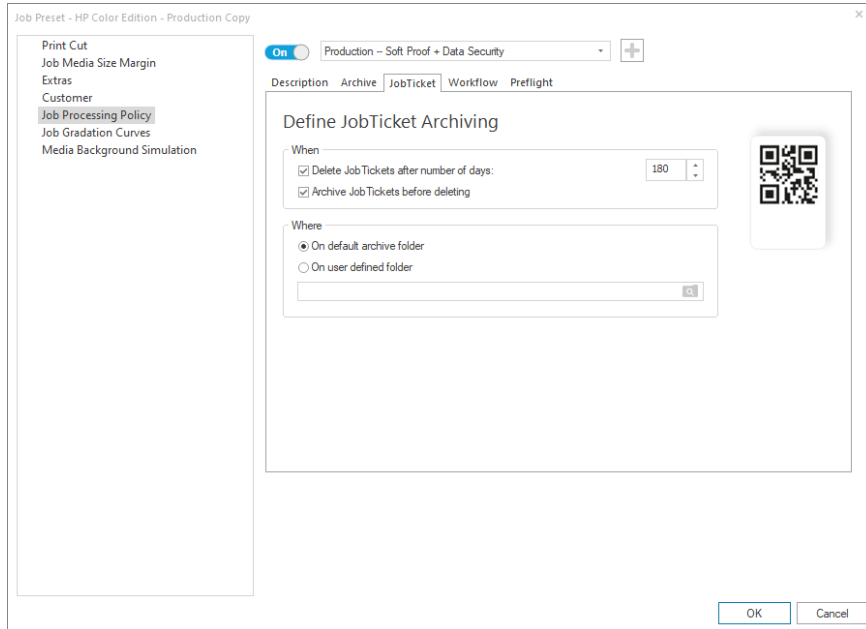
Improved Status Monitor for HP Stitch Series ●●

The Status Monitor section in the PrintQueue has been improved to better visualize the status information of the HP Stitch Series printers.



JobPresets ^{*NEW} ○●

Details



[16.1] To complete the Preset Suite, a composite preset called JobPreset has been added.

The JobPresets allow the user to define numerous parameters of a Job and store them for easy access in the future.

A dropdown of these JobPresets has been added to the JobComposer.

Combined with the ImagePreset, the JobPreset allows the user to pre-define a job creation, especially useful for repeat jobs and high-running products.

The JobPresets are also available through the Ergosoft Delta XML-Automation Interface.



Queues ^{*NEW} ●●

Details

The screenshot shows the HP Stitch S500 Printer 1 - PrintQueue window. The main area displays a list of print jobs with columns for Print, Copies, Status, Job Width, and Printer. A job preview window shows a yellow jacket and a blue jacket. The Job Details window shows the following information:

Details	Value
ID	7
Name	Printjob - 001 - 006
Created	Today 12:41 PM (16.2.1.7628)
Owner	slabh on NB-SLA
Copies	1
Job Size	162.62 cm x 266.92 cm
Features	Keep Rip Data
Media	
Media Size	+Maximum+ (162.59 cm x 35,000.00 cm)
Print Environment	HP Stitch S500 64in_Generic _45 gsm Paper_1pass 50.
Printer	HP Stitch S500 Printer 1
Spool File	487.89 MB
Status	Waiting for Start
Rip Progress	Ripped Today 12:49 PM (0:00:33)
Print Progress	
Printed	0 of 1, 1 in Print

[16.1] The Print- and CutClients have been completely redesigned.

Feature highlights:

- [16.1] Allows custom workspaces
- [16.1] Uses pane windows over tiles, which provides a better production overview and job management
- [16.2] Support of advanced custom filter for various queries ^{*new}
 - By media
 - By time range
 - By text string
 - Supports quick keyword search ^{*new}



QueueManager *NEW

Details

The screenshot displays the QueueManager application window. The main area is divided into three panes: 'Done', 'Print', and 'RIP'. Each pane contains a table of jobs with columns for ID, Name, Copies, Status, and Created. The 'Print' pane shows jobs in various states like 'Waiting for Start', 'Waiting', and 'Suspended'. The 'RIP' pane shows jobs in 'Ripping' and 'Waiting' states. On the right, a 'Job Details' pane provides information for a selected job, including its ID, Name, Created time, Owner, Copies, Job Size, Features, Media, Print Environment, Printer, Spool File, Status, Rip Progress, Print Progress, and Printed status. Below the job details is a 'Job Preview' section showing a small image of a printed object. At the bottom, a 'Print/CutQueue' pane shows a list of printer and cutter stations with their status and media type.

[16.1] The JobCenter has been replaced by the newly designed QueueManager.

- Allows custom workspaces *new
- Uses pane windows over tiles, which provides a better production overview and job management *new

Especially powerful when multiple printer and cutters are connected to one system, or if it is a network Sequoia setup

- Besides production overview, the QueueManager can optionally replace the use of Print and CutQueues entirely. One tool – the QueueManager – can be used for the actual job processing management

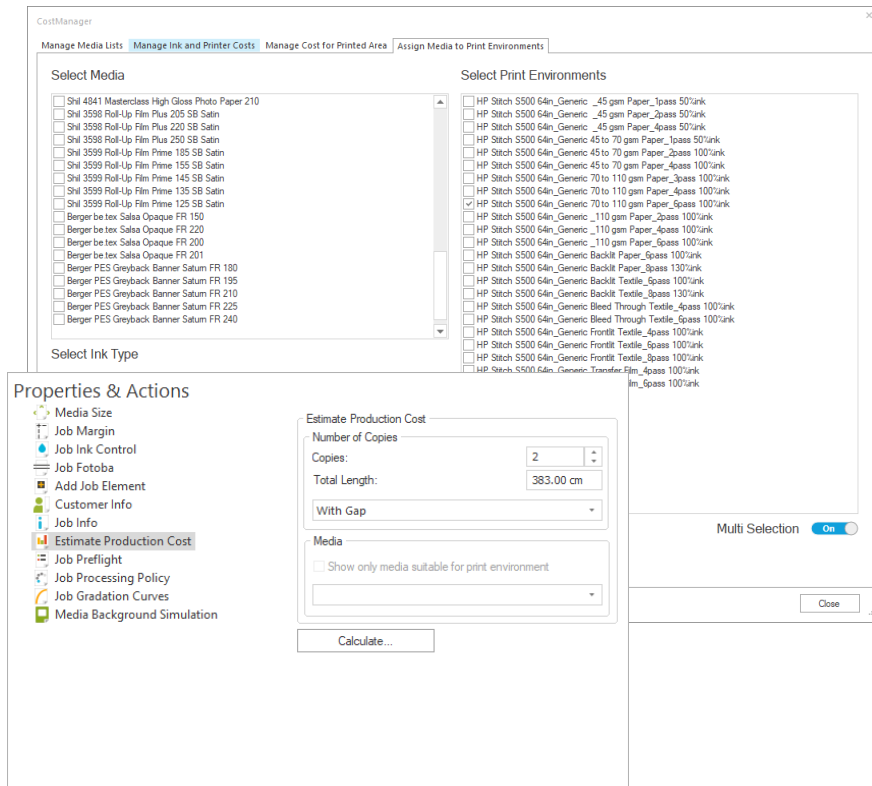
- Supports advanced custom filter for various views *new

- By printer or cutter
- By media
- By Print/CutQueue station
- By time range
- By text string
- Extended production data export functionality *new



Job Costs ^{*NEW} ○●

Details



Job cost configuration, estimation and calculation has been redesigned and enhanced. New tools have been added.

[16.1] CostManager: Allows for the administration of production cost parameters of the cost estimation and calculation. ^{*new}

- Through bulk-editing of ink, media and Print Environment assignments, it makes this administration extremely fast
- Accessible through the ControlCenter and the JobComposer
- Import material lists and costs for ink and media

[16.1] Estimate Production Cost: A new Job Property within the JobComposer that generates estimation reports of the job's production costs. ^{*new}

- Optional: Print Cost Calculation based on m2 per hour over time spent for a job ^{*new}

[16.1] Job Preflight: Allows user to generate numerous variations of preflights. ^{*new}

[16.1] Customer List: A new list import functionality allows the user to import the customer data of third party databases (e.g. CRM/ERP/..).

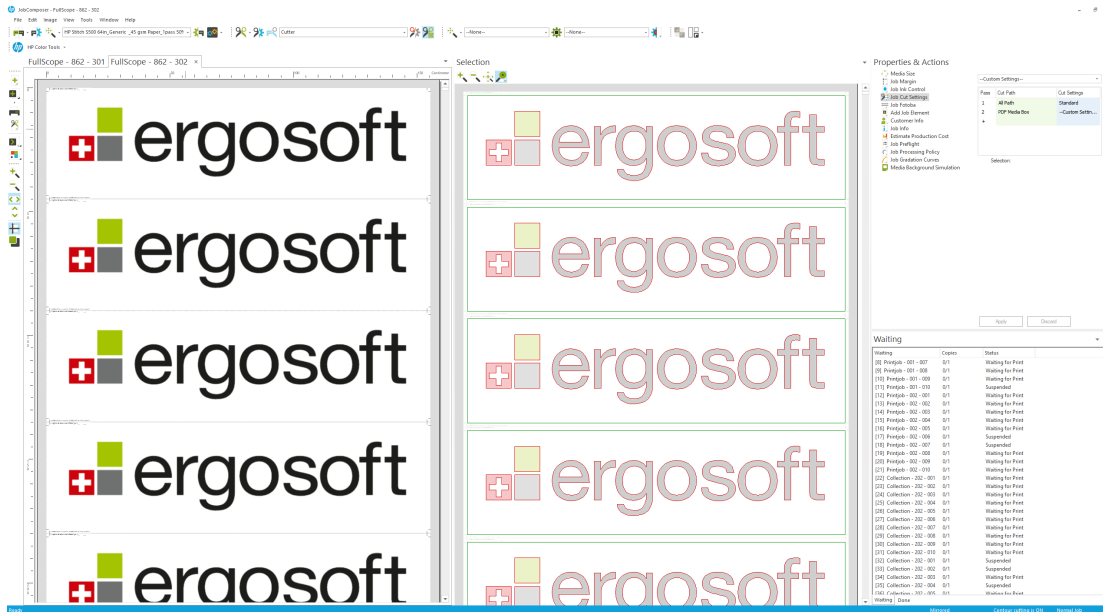
[16.1] Customer Currency and New Metrics:

A custom currency can be selected, as well as the unit for ink amount calculation can be customized.



Print and Cut Workflows ●●

Details



- [16.1] Smart Bleed & Cut Lines: Allows the generation of contour bleed and contour (cut) lines, based on the image contour***new**
- [16.1] The Print and Cut workspace has been reworked and improved
- [16.1] The Live-Cut-Path preview has been improved
- [16.1] New cut paths are supported
 - PDF boxes ***new**
 - Adobe Photoshop paths ***new**
 - “Bounding Boxes” of grouped images ***new**



Production & Workflow Details

HotFolder Improvements ○●

[16.1] Jobs can be automatically released and processed based on Job Length, a Time-driven trigger, or a combination thereof. **new*

The management of the temporary data handling has been improved and allows more user control.

[16.2] New functionality to export/import HotFolder parameters to efficiently clone existing HotFolders based on identical or similar settings. **new*





Usability



Usability Summary

ControlCenter ●●

[16.1] The Ergosoft 16 ControlCenter gives the user access to all main modules of an Ergosoft RIP and allows to manage their settings within one tool. The ControlCenter replaces the 'StartupManager' from previous versions.

SystemGuard ●●

[16.2] With the SystemGuard tool set, Ergosoft 16 introduces various new features and routines to backup relevant files, observe available disk space and to cleanup temporary data.

Online Customer Documentation Portal ●●

The extensive technical documentation, including additional multimedia content, is available online through the Ergosoft Documentation Portal.

Print & Cut Environment Wizard ●●

[16.1] A new wizard guides the user through the two main scenarios:

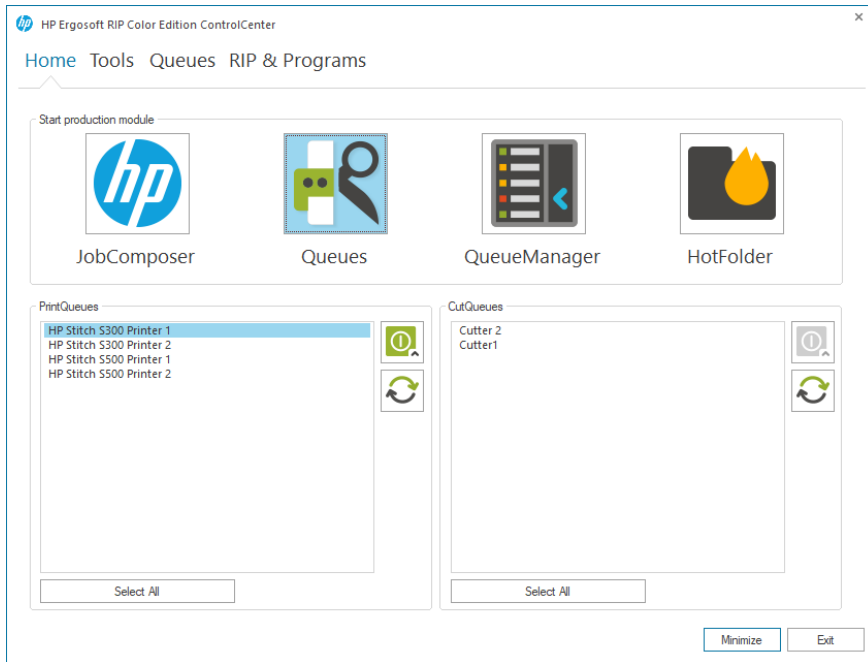
Adding a new Print/Cut Environment including a new Queue

Adding a new Print/Cut Environment based on an existing Queue



ControlCenter ^{*NEW} ●●

Details



[16.1] The new ControlCenter replaces the StartUp Manager.

Feature highlights:

Home tab - Allows the access to all main production modules of an Ergosoft RIP:

- JobComposer
- Print and CutQueues
- QueueManager
- HotFolder

Tools tab - Allows direct access to all important additional tools of an Ergosoft RIP:

- CostManager
- AccessRights
- MaintenanceTool
- Album

Queue tab - Allows the setup and advanced start configuration of all Print and CutQueues.

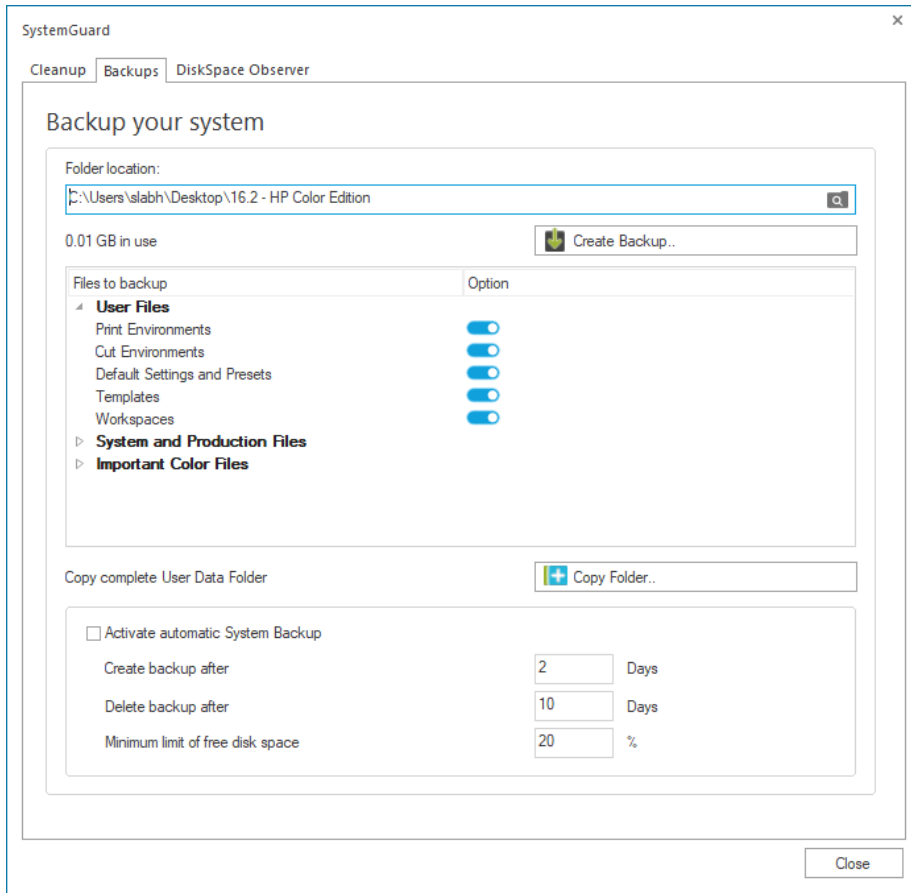
RIP & Programs tab - Allows the configuration of:

- RipEngines
- Optional features
- Start options of the ControlCenter itself



SystemGuard **NEW* ●●

Details



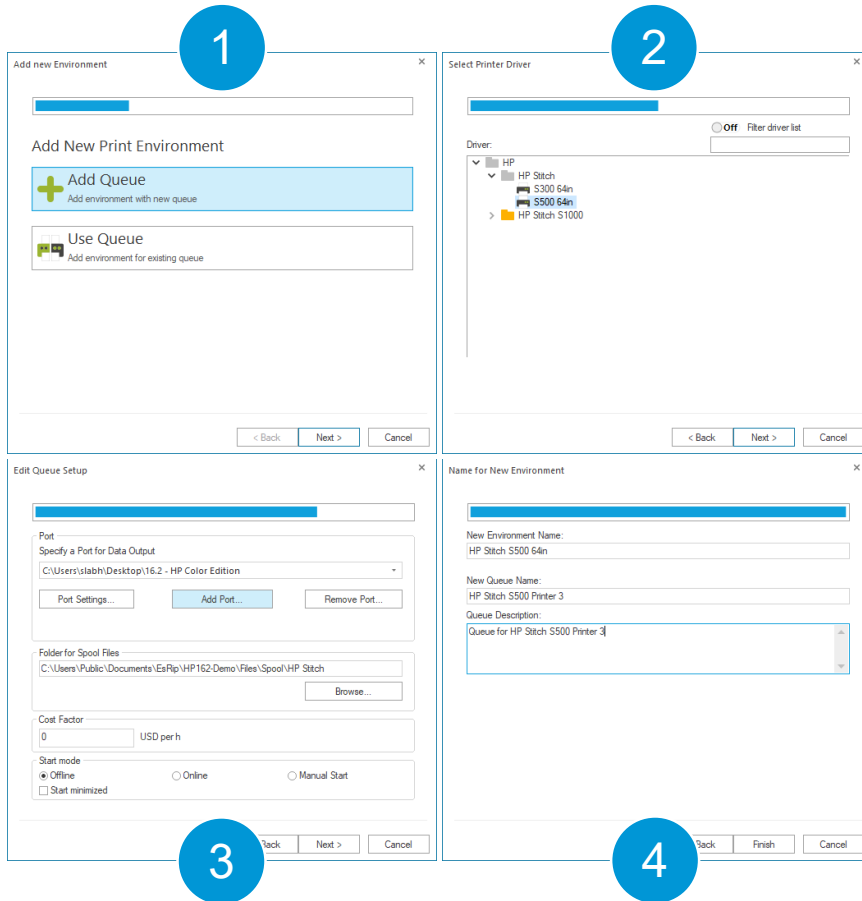
[16.2] Accessible from the ControlCenter via the tab “Tools”, the SystemGuard utility introduces the following features to backup relevant files, observe available disk space and to delete temporary data:

- **Cleanup:** Manual and auto-cleanups of temporary files
- **Backup:** Manual and auto-backup of relevant RIP system files
- **DiskSpace Observer:** Observes all local drives and warns, if disk space falls too low



Environment Setup **NEW* ●●

Details



[16.1] Wizard for the Generation of Print and Cut Environments and Queues. **new*

A new user-friendly wizard for the generation of Print and Cut Environment, including or excluding the setup of a Print/CutQueue has been implemented.



Usability

Details

Online Documentation Portal *new ●●

The technical documentation has been rewritten and is available on the Online Ergosoft Documentation Portal.

Feature highlights:

- Documentation versioning allows to update technical documentation on the fly
- Multimedia content available

Miscellaneous *new ●●

[16.1] Scalable file import and file open dialog including high quality image preview pane has been added.

[16.2] Job Processing Policies have been redesigned, integrated in a more accessible location and feature new functionalities concerning auto-archiving and deletion.

[16.2] Various list management and complex color list dialogs have been converted into resizable windows.





Color & Color Control



Color & Color Control

Summary

SwatchBook ●●

[16.1] Ergosoft 16 supports the PANTONE® Color Systems.

Other new features including:

- [16.1] Color deviation / (dE) prediction
- [16.1] Search closest color by color value
- [16.1] Print and store blends of similar colors
- [16.2] Generation of Lab/LCH color books allows to optionally use Uniform Perceptual Lab (UP Lab) instead of CIE Lab.

SwatchMatcher *new ●●

[16.2] The SwatchMatcher allows to capture existing output of company color books printed with third-party solutions and to generate a SwatchBook in Ergosoft 16 to mimic previous color results.

Color Replacement ●●

[16.1] In addition to the Named Colors, automatic Spot Color Replacement can now be established through assignments of complete SwatchBooks.

[16.1] A tolerance value has been added to various color replacement functionalities.

ColorEqualizer *new ●●

[16.2] This new toolset helps the user to align color results of multiple Print Environments for various use-case scenarios. It also supports capturing existing linearization output of third-party solutions or previous production.



Color & Color Control

Summary

Gamut Warning as Thematic Map ^{*new} ●●

[16.2] Toggle between the monochrome gamut warning and a new gamut warning based on color steps to indicate the expected color deviation of the actual printing result. Thresholds can be user-defined.

Target Printer Simulation ●●

[16.1] Easier to find as a new Image Property & Action.

[16.1] Assigns an output simulation profile to images for color proofing/simulation purposes.

Improved EPS/PDF Preview ●●

[16.1] A new preview pane within the JobComposer shows a more accurate color preview of the file formats PS/EPS and PDF applying the input – intermediate – output color spaces and rendering intents.

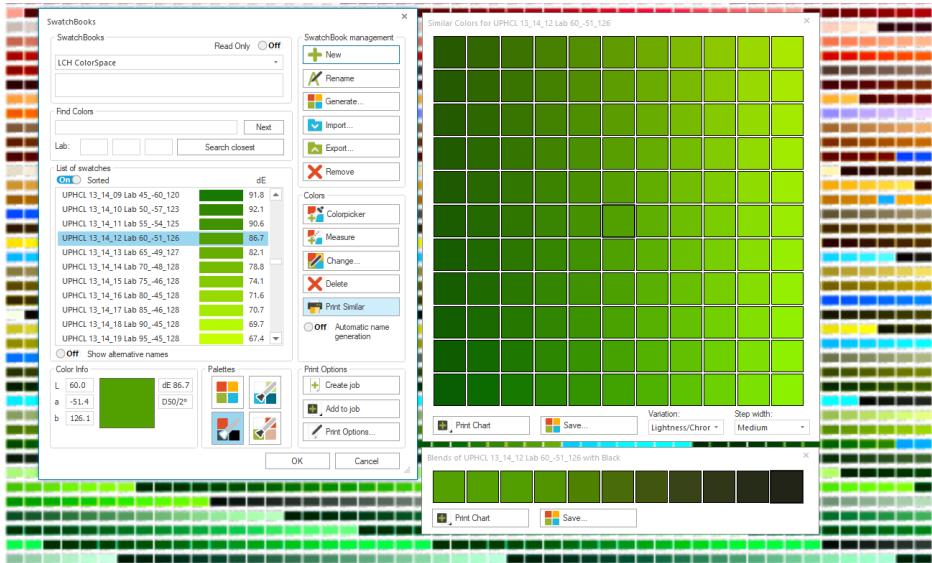
Density Linearization ●●

[16.1] New industry standards and advanced custom absorption curves are supported. The density linearization wizard has been refined.



SwatchBook ●●

Details

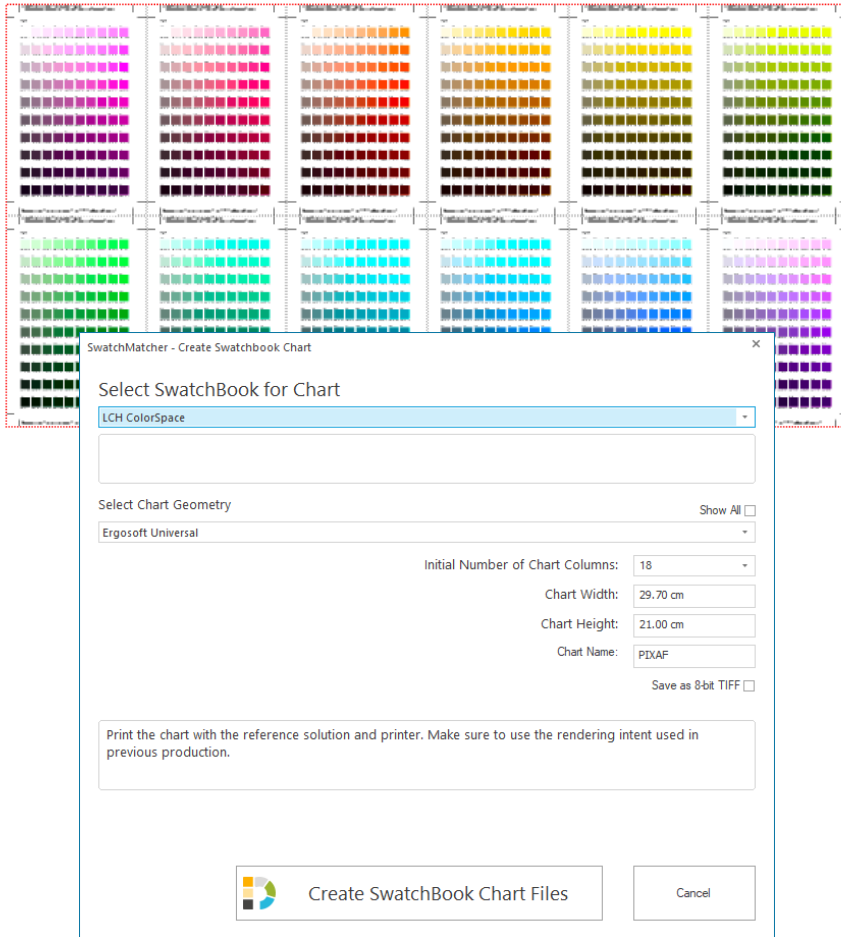


- [16.1] A new XML-based format allows the storage of more color-relevant information in a color book and also to display them in the SwatchBook feature: *new
 - Details about light standard
 - SwatchBook description
 - Optional second color swatch name
- [16.1] PANTONE® Color Systems INCLUDED *new
- [16.1] dE predictions are shown in the color list of SwatchBook *new
- [16.1] A new search function by color value (Lab) allows to search for the closest match within the color list of a SwatchBook
- [16.1] Palettes and Blending tools:
 - Extensively revised
 - Allow to be directly printed through the Palette windows *new
 - Allow to be stored as a new SwatchBook through the Palette windows *new
 - A new Palette window has been added, which presents color variation of a swatch selection:
 - Based on Lightness and Hue *new
 - Or based on Saturation and Hue *new
 - Color steps can be user-defined *new
- [16.2] SwatchBooks can optionally be generated using Uniform Perceptual Lab (UP Lab) instead of CIE Lab *new
- [16.2] All SwatchBook dialogs are resizable now *new



SwatchMatcher ^{*NEW} ●●

Details

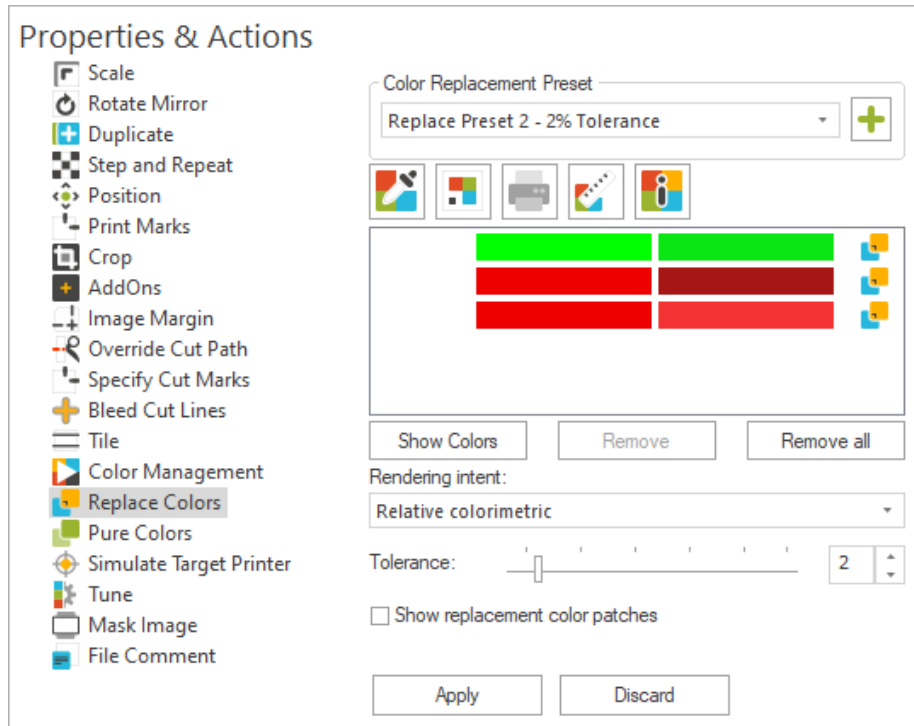


[16.2] The SwatchMatcher allows to capture color books printed with third party solutions through:

- Generation of a target measurement chart (TIFF Lab, 16-bit or 8-bit) based on a color book import
- Measuring the chart printed with the third-party solution
- Generation of a SwatchBook which mimics the existing color book printout

Color Replacement ●●

Details



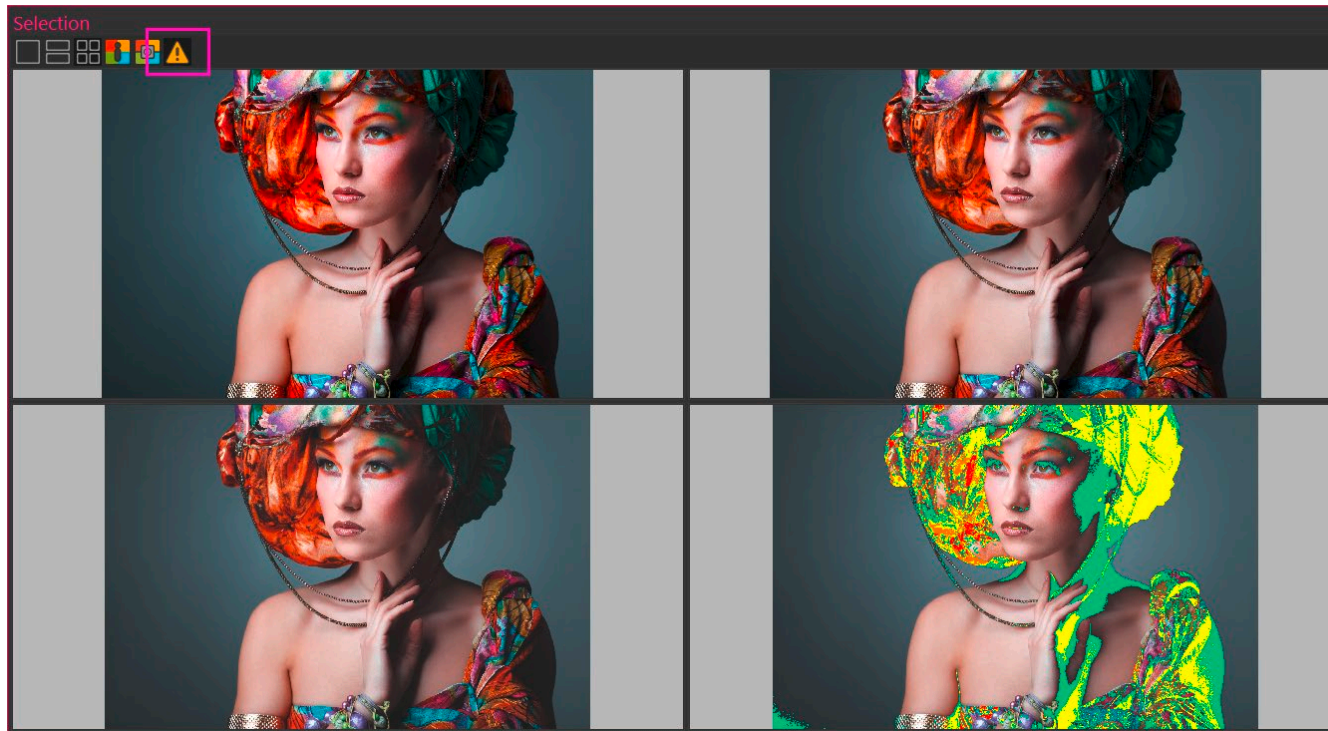
[16.1] A new function allows the automatic color replacement based on color names (Spot Colors). Complete SwatchBooks can be used in the Image Property, but as well within the ImagePreset. **new*

[16.1] A tolerance value has been added to all color replacement functionalities based on an input color value including PureColors. **new*



Gamut Warning as Thematic Map ^{*NEW} ●●

Details



[16.2] Toggle between the monochrome (green gamut warning color) and a new gamut warning using 4 colors (green, yellow, orange, red). The thresholds for the levels can be defined under User Preferences.

Target Printer Simulation *NEW ●●

Details

Properties & Actions

- Scale
- Rotate Mirror
- Duplicate
- Step and Repeat
- Position
- Print Marks
- Crop
- AddOns
- Image Margin
- Override Cut Path
- Specify Cut Marks
- Bleed Cut Lines
- Tile
- Color Management
- Replace Colors
- Pure Colors
- Simulate Target Printer**
- Tune
- Mask Image
- File Comment

Printer Simulation Preset
Coated Fogra-Intermediate +

Simulate Target Printer
Select the printer profile you would like to proof or simulate

CoatedFOGRA39.icc

Coated FOGRA39 (ISO 12647-2:2004)

Rendering intent for Printer Simulation
Relative colorimetric

Import profile...

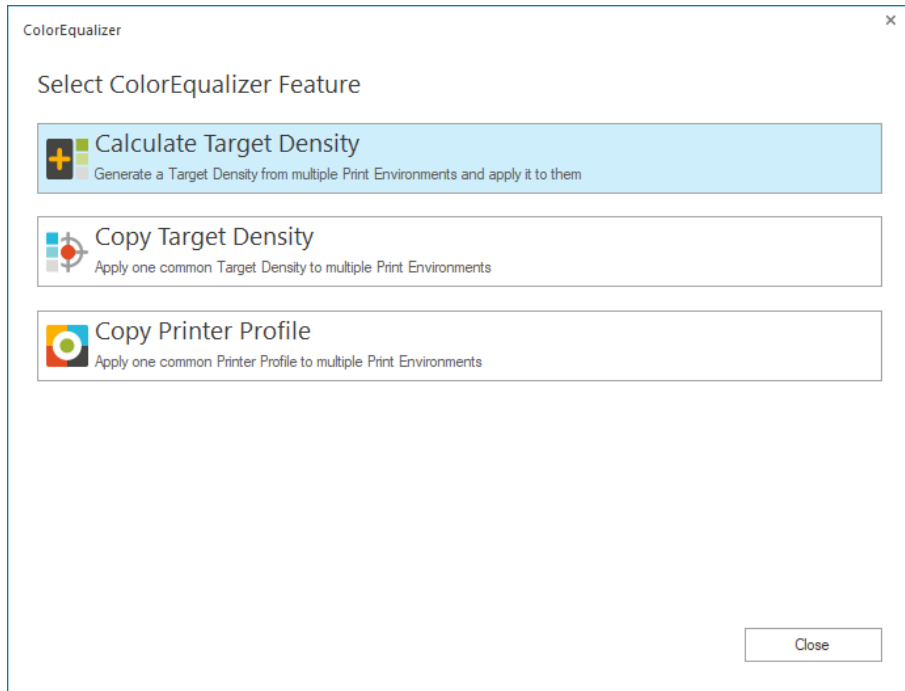
Apply Discard

[16.1] A new centralized Image Property called Simulate Target Printer within the JobComposer allows the user to assign a proofing profile and rendering intent for image placed in the Jobs.



ColorEqualizer ^{*NEW} ●●

Details



[16.2] In order to align color output, a new toolset has been added, which features the following tools:

- Auto-generate and apply a Target Density for/to a selection of Print Environments
- Bulk-assignment of existing Target Density (Ergosoft or third-party) to a selection of Print Environments
- Bulk-assignment of a printer profile to a selection of Print Environment
- Capturing of existing density output of an existing printing solution and generation of a Target Density, which mimics the existing density output



Color & Color Control

Details

Improved Color Preview for EPS and PDF

*new ●●

[16.1] A newly developed functionality within the JobComposers renders an improved preview of EPS and PDFs, respecting input-, output, intermediate profiles and rendering intents selected. This preview is being displayed in a preview pane of the JobComposer.

Density Linearization – Density Status

*new ●●

[16.1] The default Density Status E has been updated to the latest norm. Optionally, there are newly also Status T (accepted standard in the United States) and other filters available.





UI Redesigns



UI Redesigns

Summary

Almost all user interfaces within modules, windows and wizards have been refined.

Focus:

- [16.1] Easy accessibility
- [16.1] Greater consistency
- [16.1] Improved usability
- [16.2] Resizable windows

Visually direct comparisons between the previous version and Ergosoft 16 illustrate this concept

Main dialogs this concerns:

- Job Properties and Actions
- Image Properties and Actions
- Print and Cut Environment management dialog
- New shortcuts have been added to the JobComposer
- Image replacements supported by keyboard arrow keys
- Default Workspaces optimized
- Application Defaults
- ImagePresets





HP Ergosoft RIP Color Edition

Highlights of the Ergosoft 16 Release

